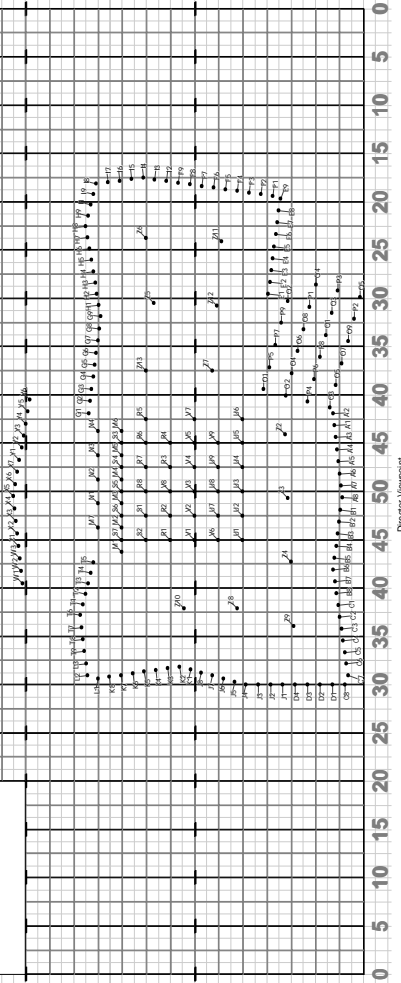
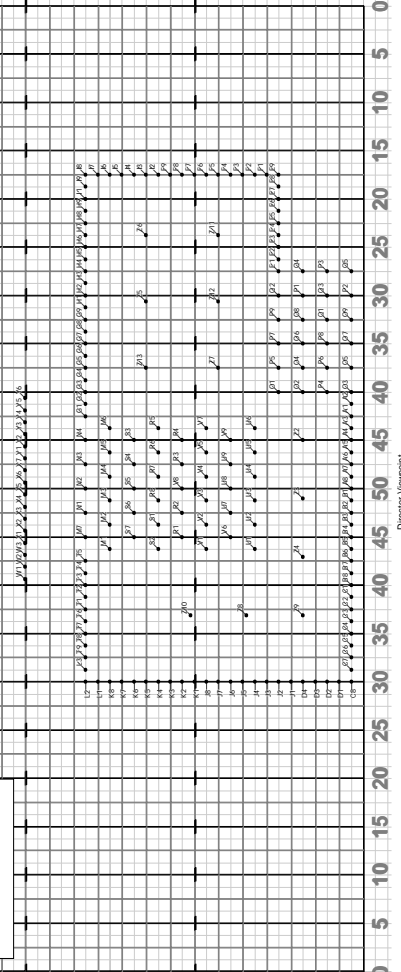


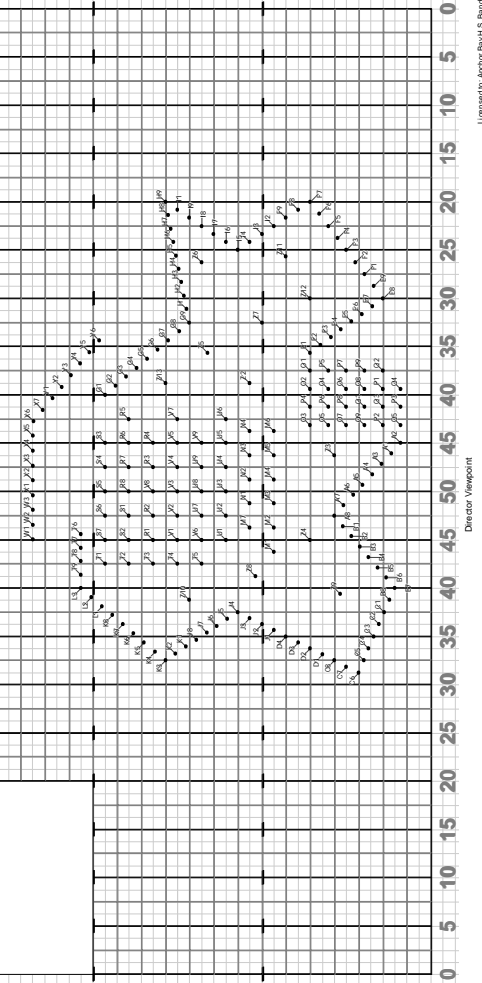
PAGE: 16A  
COUNTS: 4  
M: 5  
- subset for melba and low brass only



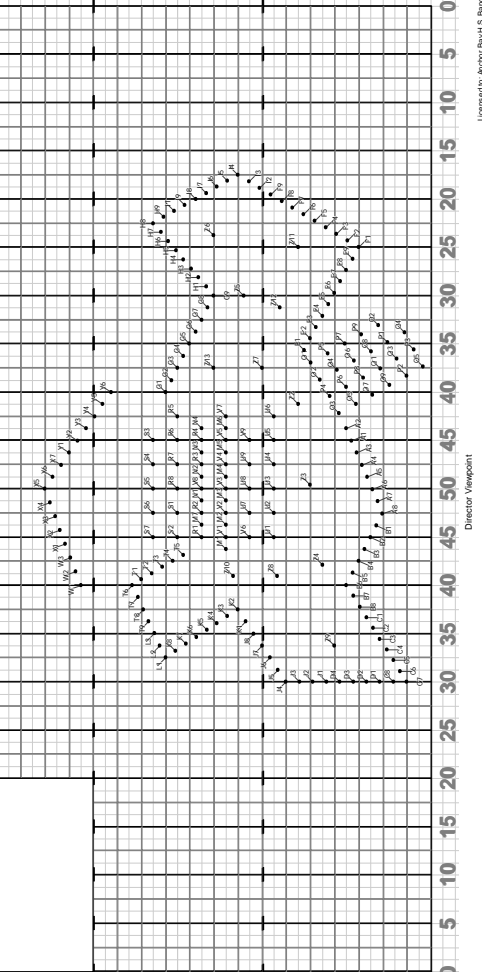
PAGE: 16  
COUNTS: 16  
M: 1-4  
- all MT 16



PAGE: 18  
COUNTS: 16  
M: 9-12

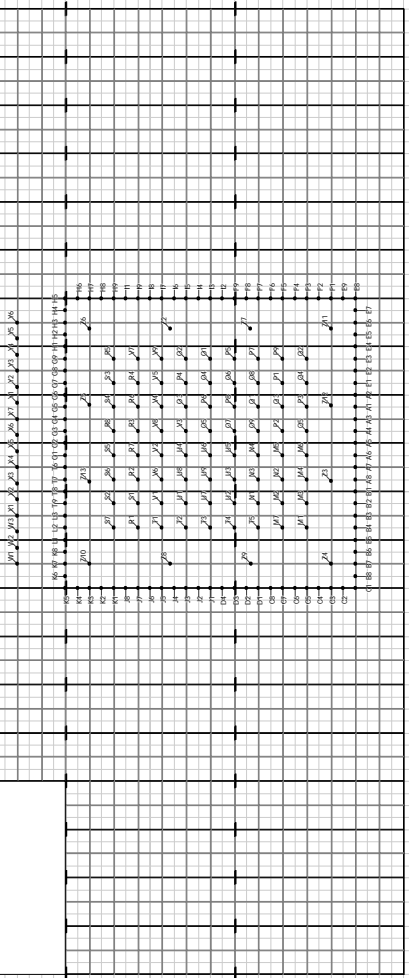


PAGE: 17  
COUNTS: 16  
M: 5-8



PAGE: 20  
COUNTS: 16  
M: 17-20

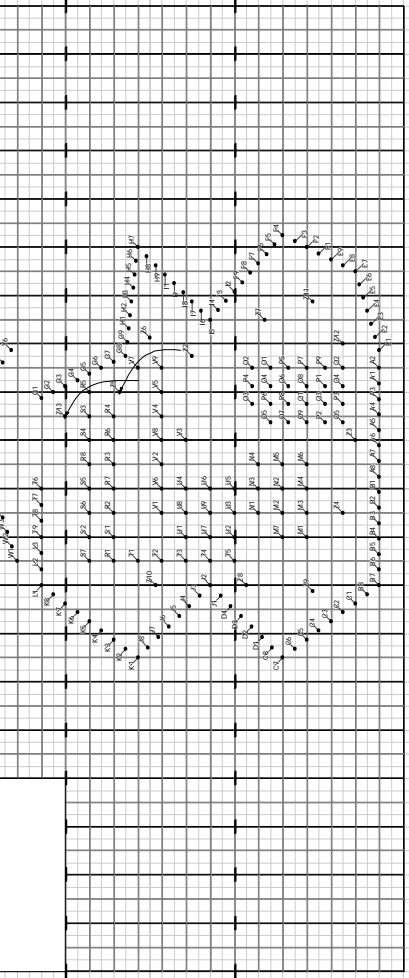
- Z5 will need to pass threw trombones



Director Viewport

PAGE: 19  
COUNTS: 16  
M: 13-16

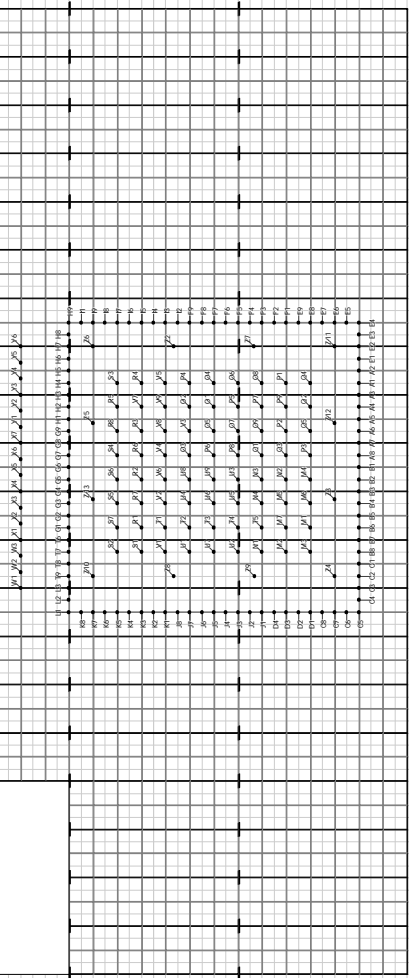
- Z19 and Z5 will need to take a rounded path to their dots



Director Viewport

PAGE: 22  
COUNTS: 8  
M: 23-24

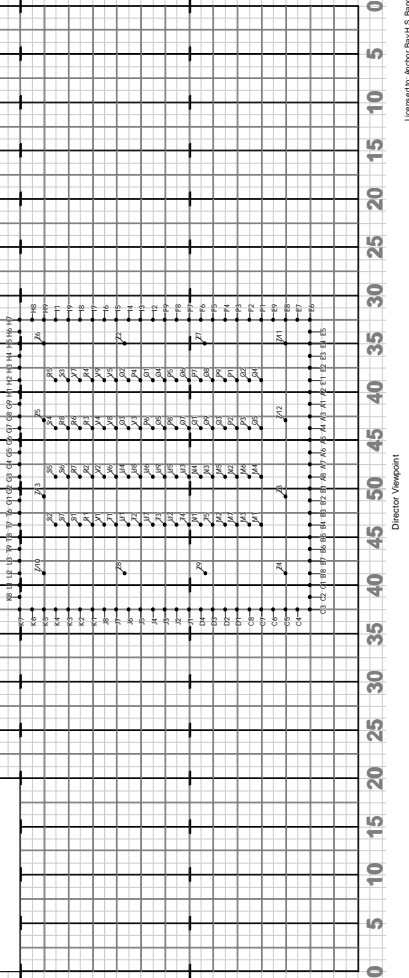
- flutes, clarines, alto saxes, and T6-T9  
FTL to these dots



Director Viewport

PAGE: 21  
COUNTS: 8  
M: 21-22

- Z19 and Z5 will need to take a rounded path to their dots



Director Viewport

PAGE: 24  
COUNTS: 8  
M: 27-28

- flutes, clarinet, alto saxes, and T6-T9  
FTL to these dots

PAGE: 25  
COUNTS: 16  
M: 29-32

- all hold  
- possibility for horn visuals here

PAGE: 23  
COUNTS: 8  
M: 25-26

PAGE: 26  
COUNTS: 16  
M: 33-36

PAGE: 27  
COUNTS: 16  
M: 37-40

- G1 and G2 will need to wait and let the tenor saxes go by before going to their dots

- some flutes may need to take a slightly rounded path to their dots

- Z4 and Z12 will need to take a rounded path to their dots

PAGE: 28  
COUNTS: 16  
M: 41-44

- all hold

